



# Global adolescent health coming of age

**David Ross**

Maternal, Newborn, Child and Adolescent Health (MCA) Department  
World Health Organization

Vaccine Confidence and HPV Vaccination Conference, London, 7<sup>th</sup> June 2017

# Global adolescent health coming of age

- **Our Future: A Lancet Commission on Adolescent Health & Wellbeing**

THE LANCET

- Commission Report (10<sup>th</sup> May 2016)
- Standing Commission

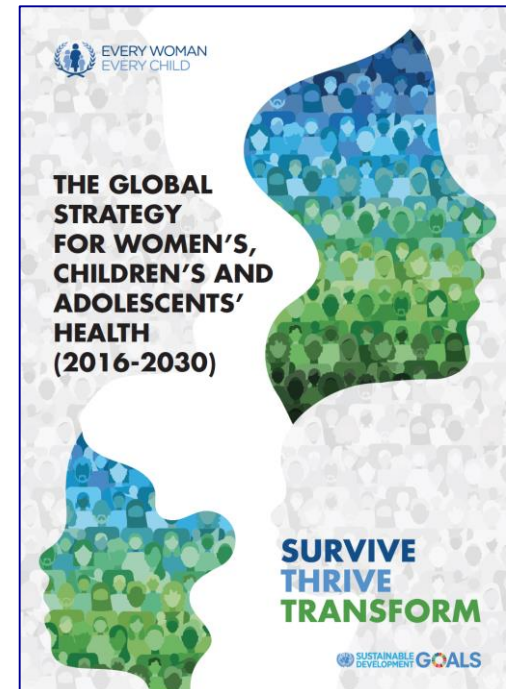
- **Global Strategy for Women's, Children's and Adolescents' Health (2016-2030)**

➤ **SURVIVE**

➤ **THRIVE**

➤ **TRANSFORM**

- **Global Financing Facility (GFF)**



# Why invest in adolescent health?

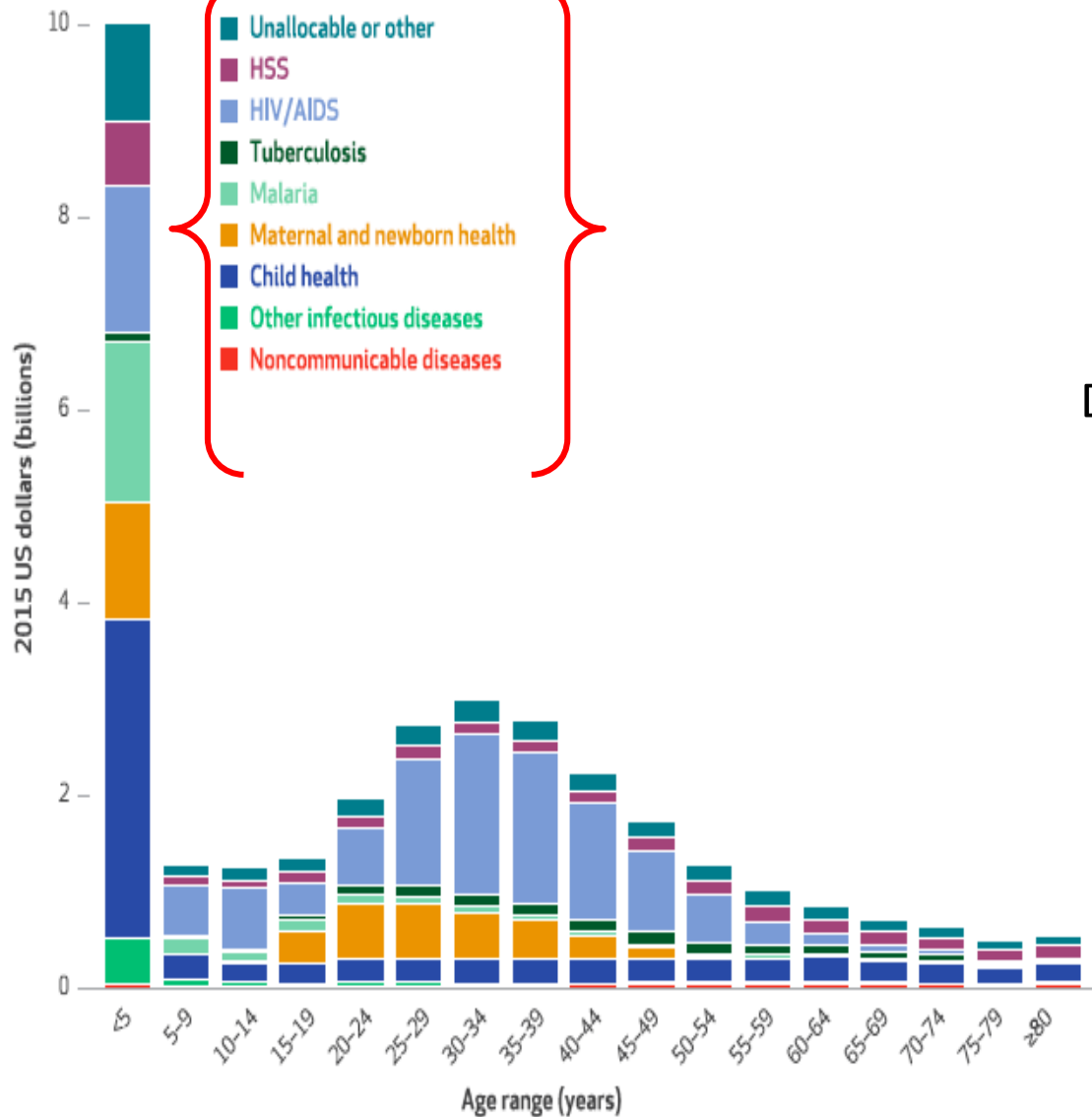
## Return on investment

Package	Cost per capita	Benefit-Cost Ratio
Physical, mental, sexual health	\$4.6	>10
Road traffic injury	\$0.6	5.9
Child marriage	\$3.8	5.7
Secondary education	\$22.6	12

Returns in LICs > Lower MICs > Upper MICs

Source: Sheehan et al, The Lancet, April 2017

Spending on development assistance for health in 2013, by age range and health focus area



# Limited tracking of investment

Development assistance for health

Source: Skirbekk et al,  
Health Affairs, May 2017

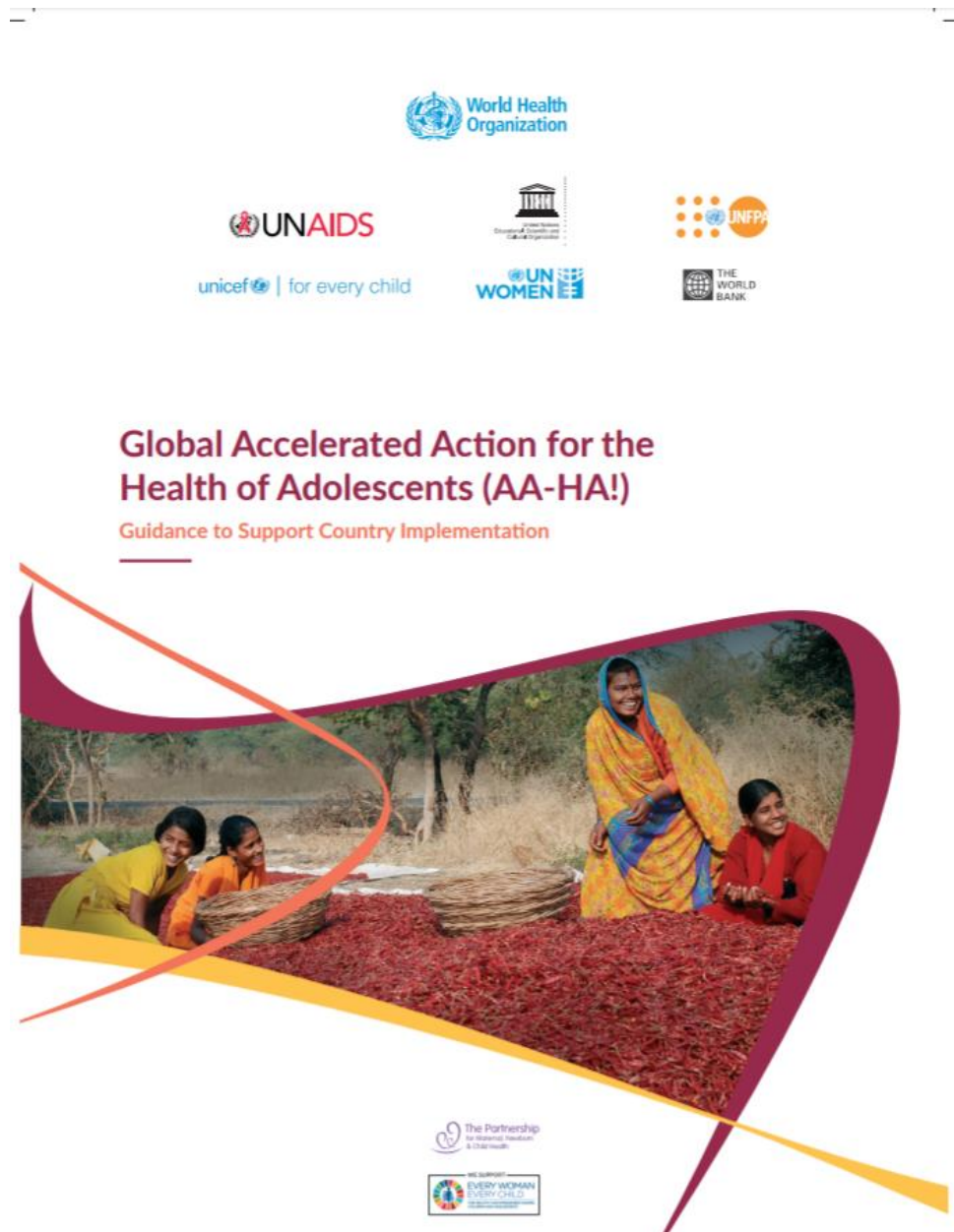
# Disease Control Priorities

- 3<sup>rd</sup> Edition will include Module 8 on Child & Adolescent Health – to be launched within next 3 months
- Will include suggested package(s) of interventions & further costing & cost-effectiveness analyses



# GLOBAL ACCELERATED ACTION FOR THE HEALTH OF ADOLESCENTS (AA-HA!)

Guidance to Support  
Country  
Implementation



# AA-HA! moment



Oh, I get it now!

- **Towards implementation of the adolescent component of the Global Strategy for Women's, Children's and Adolescents' Health (2016-2030)**
- **Provides technical advice to help countries decide what to do and how to do it in adolescent health**

# Development of the Global AA-HA!

- Led by WHO, the UN H6, UNESCO, PMNCH & EWEC developed the Global AA-HA!
- In consultation with an advisory group of Ministry of Health representatives, young people, academics, civil society organisations and other partners

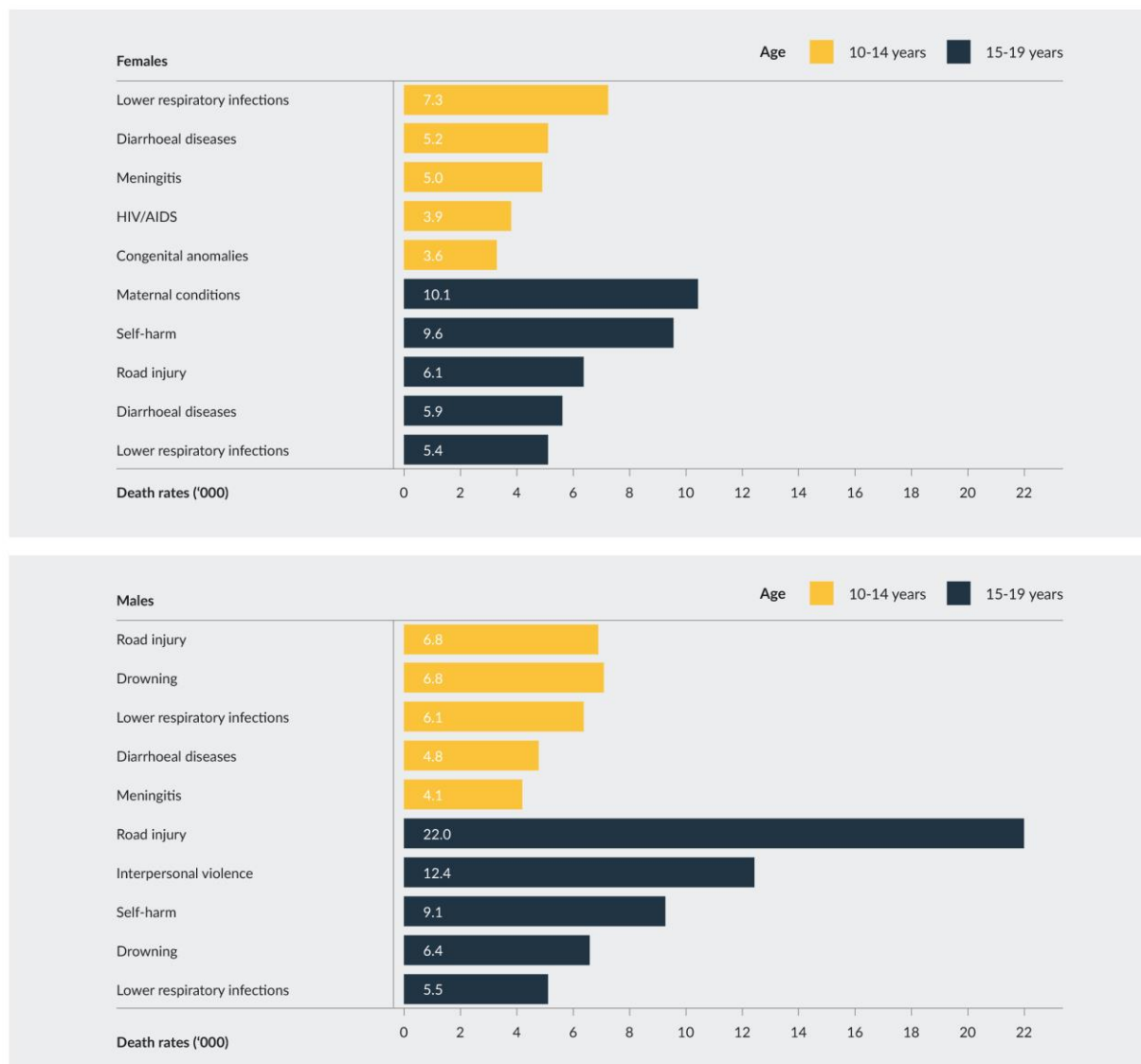




Main Reference Document	What is special about adolescents and why investing in them results in long term societal benefits <i>Section 1</i>	Addressing adolescent health needs in humanitarian and fragile settings	Leadership and participation of adolescents and young people
	Global and regional adolescent health & risk profiles <i>Section 2</i>		
<b>Systematic approach for the implementation of accelerated action for the health of adolescents (AA-HA!)</b>	What works: the AA-HA! menu of evidence-based interventions <i>Section 3</i>		
	Needs assessment Landscape analysis Setting priorities <i>Section 4</i>		
	Planning and implementing national programmes <i>Section 5</i>		
	Monitoring and evaluating adolescent health programmes Priorities for adolescent health research <i>Section 6</i>		
	<b>Conclusion</b> <i>Section 7</i>		

**Annexes & Appendices (online only)**

## Leading causes of death by sex and age, 2015



<sup>a</sup>2015 estimates rank AIDS lower than previous estimates because of a reassessment by UNAIDS of inputs into the Spectrum model used to produce the estimates. Re-analysis of 2012 estimates suggested that the high ranking of AIDS as second cause of adolescent deaths globally was overestimated. Nevertheless, AIDS remains one of the leading causes of adolescent death, particularly in African LMICs. Source: (16a); (16c)

# Adolescent health is much more than death & Illness

- Risk and Protective Behaviours
- Vulnerability and Resilience



# Evidence-based Interventions

Area	Examples
Positive development	<ul style="list-style-type: none"><li>• Adolescent-friendly health services</li><li>• Health promoting schools</li></ul>
Unintentional injuries	<ul style="list-style-type: none"><li>• Road traffic injury</li><li>• Drowning</li></ul>
Violence	<ul style="list-style-type: none"><li>• Interpersonal violence</li><li>• Sexual &amp; gender-based violence</li></ul>
SRH (incl HIV)	<ul style="list-style-type: none"><li>• Comprehensive sexuality education</li><li>• Prevention, detection &amp; treatment of STIs &amp; HIV</li></ul>

# Evidence-based Interventions (cont...d)

Area	Examples
Other communicable diseases	<ul style="list-style-type: none"><li>• TB, diarrhoea, pneumonia, meningitis, malaria</li><li>• Vaccines</li></ul>
Noncommunicable diseases, nutrition and physical activity	<ul style="list-style-type: none"><li>• Nutrition, physical activity, no tobacco, alcohol or drugs</li><li>• Leukaemia, asthma, skin diseases</li><li>• Anaemia</li></ul>
Mental health disorders, substance use, self-harm	<ul style="list-style-type: none"><li>• Depression</li><li>• Anxiety</li><li>• Self-harm</li><li>• Substance use</li></ul>
Humanitarian & fragile settings	<ul style="list-style-type: none"><li>• Interventions of particular importance related to nutrition, disability &amp; injury, violence, SRH, WASH, mental health</li></ul>

# Evidence-based Interventions (cont...d)

Vaccine	Target Group
HPV	<ul style="list-style-type: none"><li>• 9-13y girls</li></ul>
Tetanus (booster)	<ul style="list-style-type: none"><li>• All</li></ul>
Rubella	<ul style="list-style-type: none"><li>• Adolescent girls</li></ul>
Hepatitis B, typhoid, cholera, meningococcal meningitis, hepatitis A, rabies, dengue, tick-borne encephalitis	<ul style="list-style-type: none"><li>• High-risk groups</li></ul>
Seasonal influenza	<ul style="list-style-type: none"><li>• Pregnant</li></ul>
Varicella	<ul style="list-style-type: none"><li>• Countries where mean age of acquisition <math>\geq 15y</math></li></ul>
Childhood vaccines	<ul style="list-style-type: none"><li>• If missed</li></ul>



# Costing Tools

- **WHO Cervical Cancer Prevention and Control Costing (C4P) Tool**
- **One Health Tool Adolescent Module**

# Priorities

- **Must be driven by the burden of disease and risk factors for future burden PLUS evidence of effectiveness**
  - **It's more than sex**
  - **It's girls and boys**
  - **It's more than the health sector**
  - **It's about survive, thrive, and transform**
  - **Needs to driven by local needs assessment, landscape analysis**
  - **Equity (eg. Innov8 tool)**
  - **Need young people and their advocates at the table**

# For further information....



[http://www.who.int/maternal\\_child\\_adolescent/topics/adolescence/en/](http://www.who.int/maternal_child_adolescent/topics/adolescence/en/)

# THANK YOU



[www.who.int/adolescent/second-decade](http://www.who.int/adolescent/second-decade)  
<http://everywomaneverychild.org/>